

Crocketville East

Hampton County, SC

18.1 (+/-) Acres

Offered at \$144,800 (\$8,000/acre)

Shown by appointment only

For Showings

Bill Mixon	(803) 842-4602	bill@wisebatten.com
Mary Beth Crapse	(803) 942-3824	marybeth@wisebatten.com

Notes:

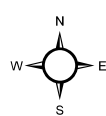
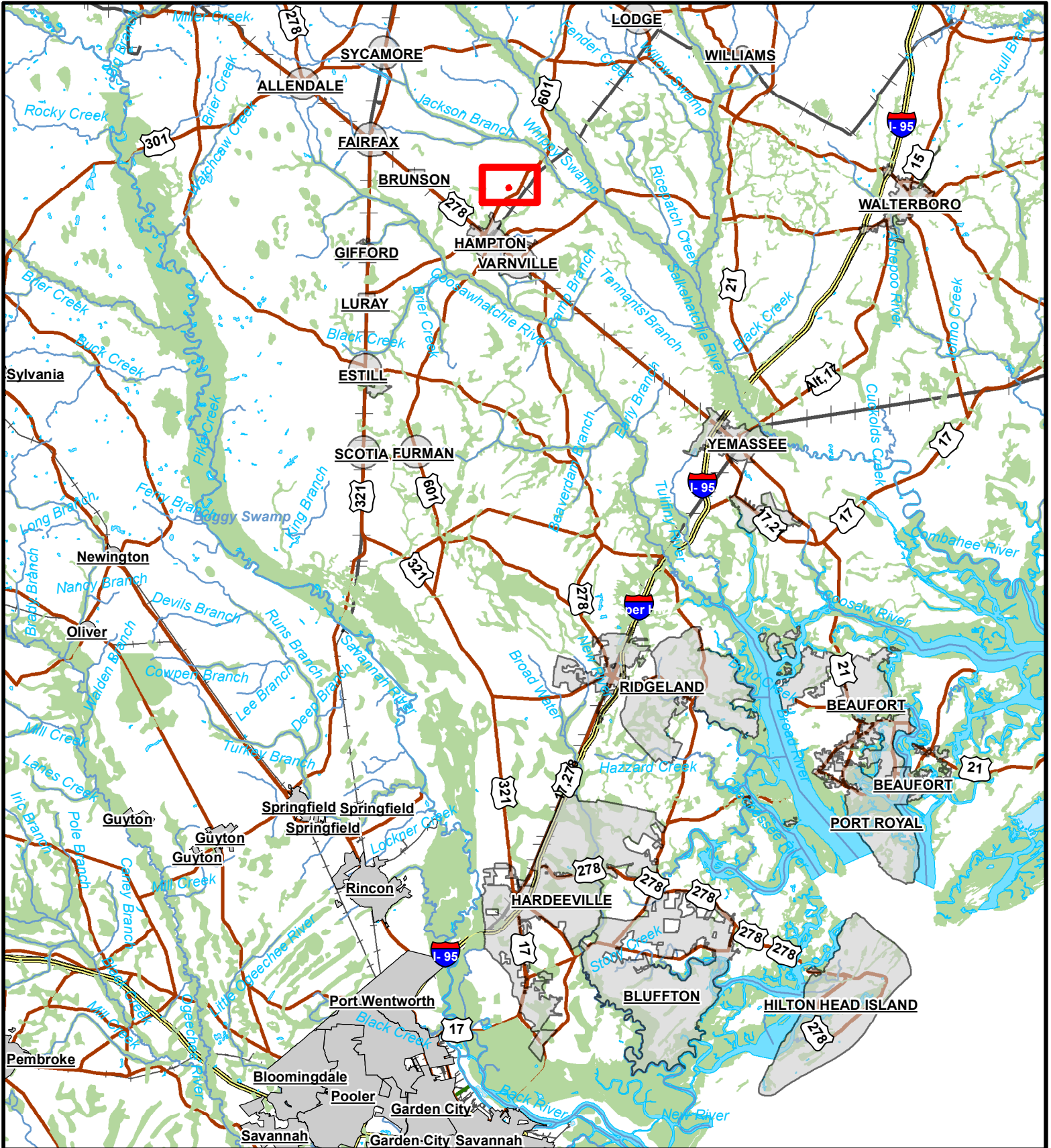
1. This is a joint listing with Brown Land + Plantation Advisors
2. This offering is subject to change or withdrawal without notice.

Note to Brokers: To be eligible for any commission offered by the Seller when purchasing a property listed by Wise Batten, Inc., a cooperating broker must be identified at the time of initial contact and must be present at the initial showing. If these conditions are not met, any cooperating broker compensation will be at the sole discretion of Wise Batten, Inc. Buyers are free to engage and compensate their own brokers independently.



Crocketville East 18.1 Acres – Property Highlights

- 18.1 +/- acres near Crocketville, SC in Hampton County
- 18.1 +/- acres of planted loblolly pine (2023)
- 972 +/- feet of frontage on Prince William Rd (paved)
- Excellent deer and turkey populations
- Very productive soils for timberland
- 5 +/- miles to Hampton, SC
- 50 +/- miles to Beaufort, SC
- 61 +/- miles to Bluffton, SC
- 65 +/- miles to Savannah, GA
- No conservation easements

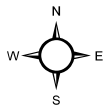
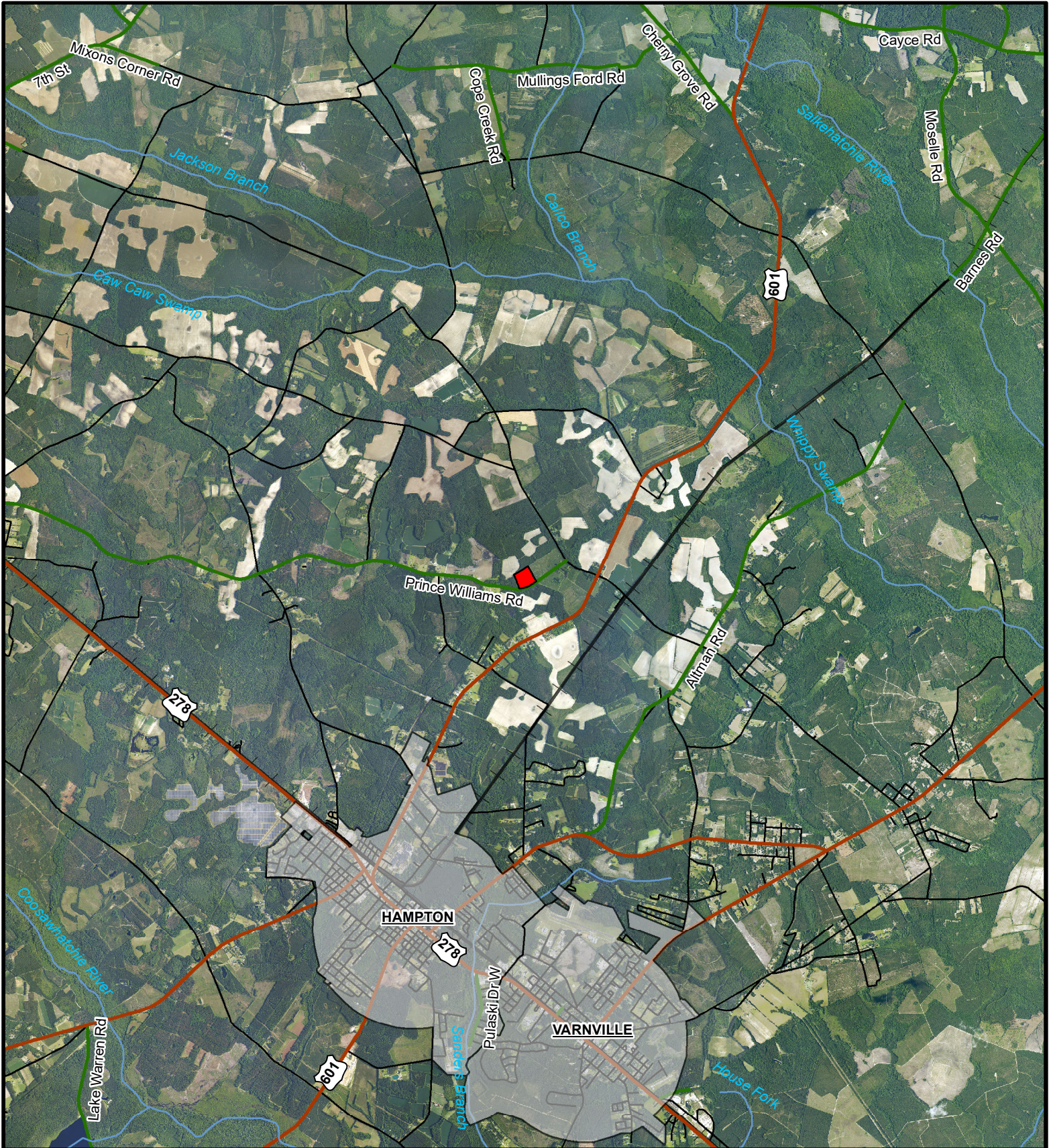


Legend

Tract Location



Location Map
 18.1 Acre Tract
 18.1 +/- GIS Acres
 Hampton County, SC
 Date: 2/9/2026

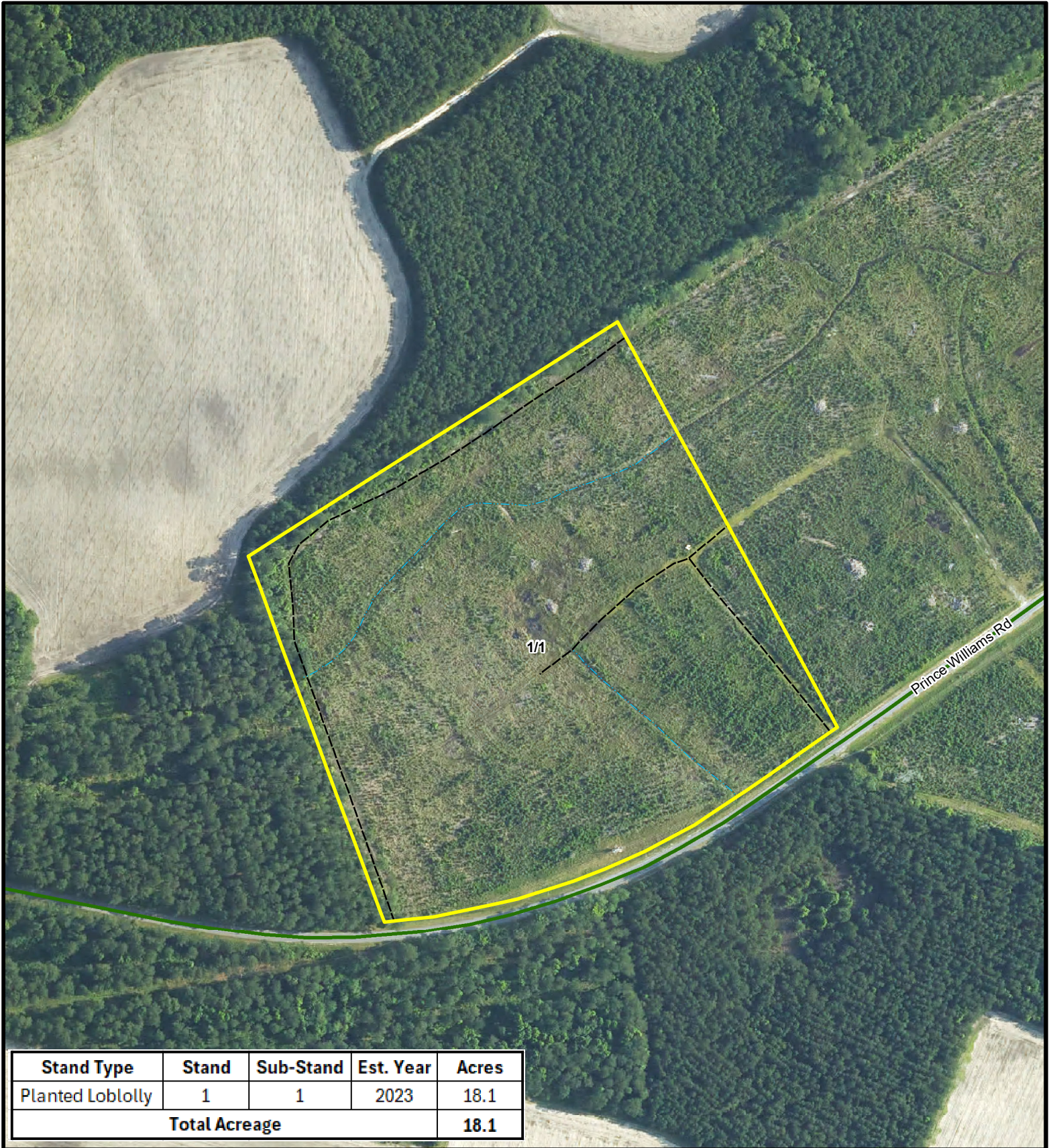


Legend

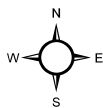
Tract Location



Location Map
 18.1 Acre Tract
 18.1 +/- GIS Acres
 Hampton County, SC
 Date: 2/9/2026
 2025 Aerial Photography

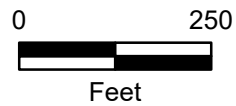


Stand Type	Stand	Sub-Stand	Est. Year	Acres
Planted Loblolly	1	1	2023	18.1
Total Acreage				18.1

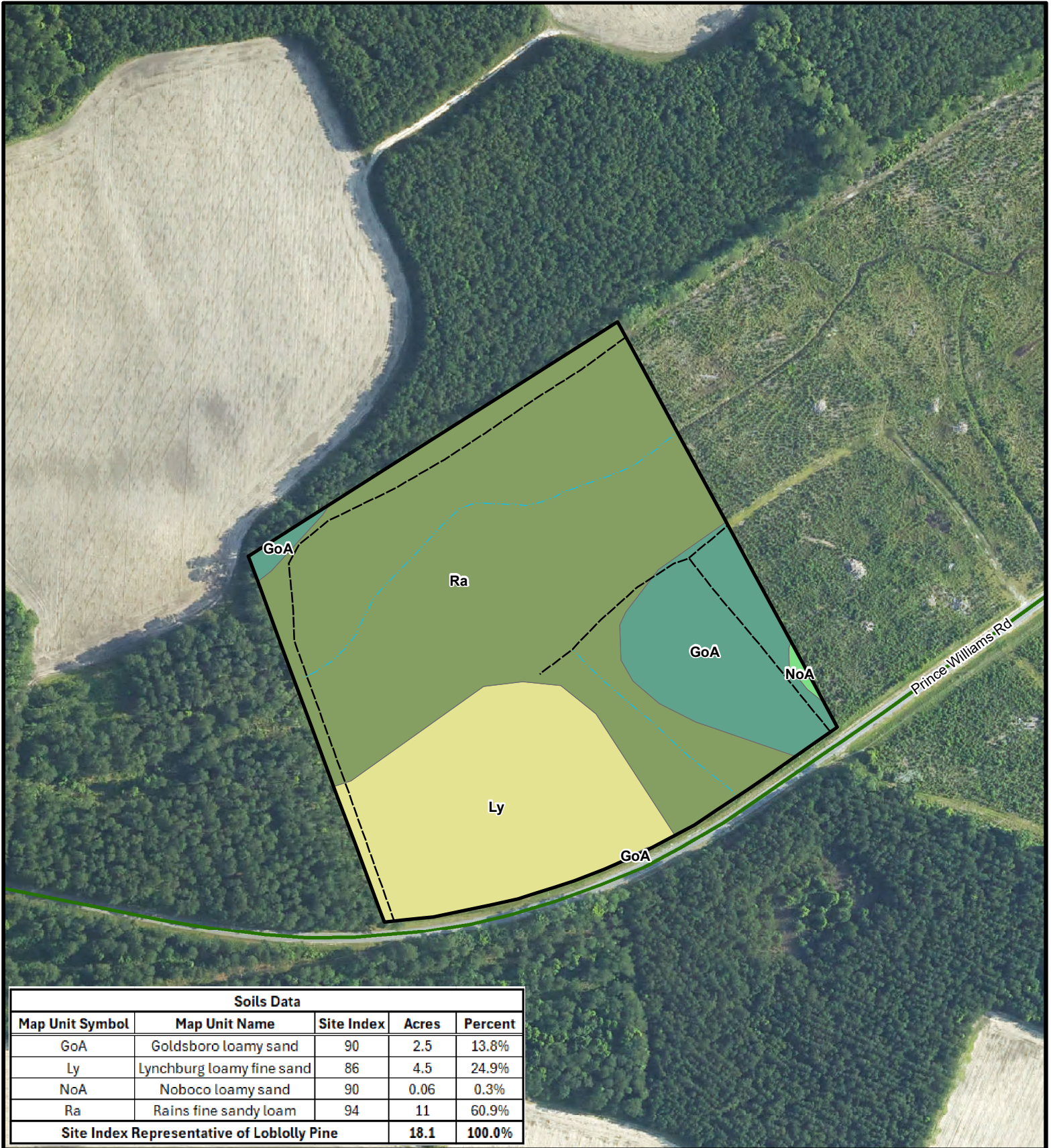


Legend

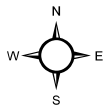
- Access Road
- Drainage Ditch
- Tract Boundary



Stand Map
 18.1 Acre Tract
 18.1 +/- GIS Acres
 Hampton County, SC
 Date: 2/9/2026
 2025 Aerial Photography

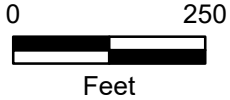


Soils Data				
Map Unit Symbol	Map Unit Name	Site Index	Acres	Percent
GoA	Goldsboro loamy sand	90	2.5	13.8%
Ly	Lynchburg loamy fine sand	86	4.5	24.9%
NoA	Noboco loamy sand	90	0.06	0.3%
Ra	Rains fine sandy loam	94	11	60.9%
Site Index Representative of Loblolly Pine			18.1	100.0%



Legend

- Access Road
- Drainage Ditch
- Tract Boundary



Soils Map
 18.1 Acre Tract
 18.1 +/- GIS Acres
 Hampton County, SC
 Date: 2/9/2026
 2025 Aerial Photography