

Little Haven Farm

9.75 (+/-) Acres

Cummings, SC
(Hampton County)

Priced at \$149,995 (\$15,384/acre)

For Showings

Mary Beth Crapse	(803) 942-3824	marybeth@wisebatten.com
Bill Mixon	(803) 842-4602	bill@wisebatten.com
Wise Batten, Inc.	(803) 625-4256	

Additional Information may be seen at www.wisebatten.com

This property is not encumbered by a conservation easement.

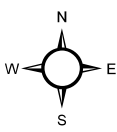
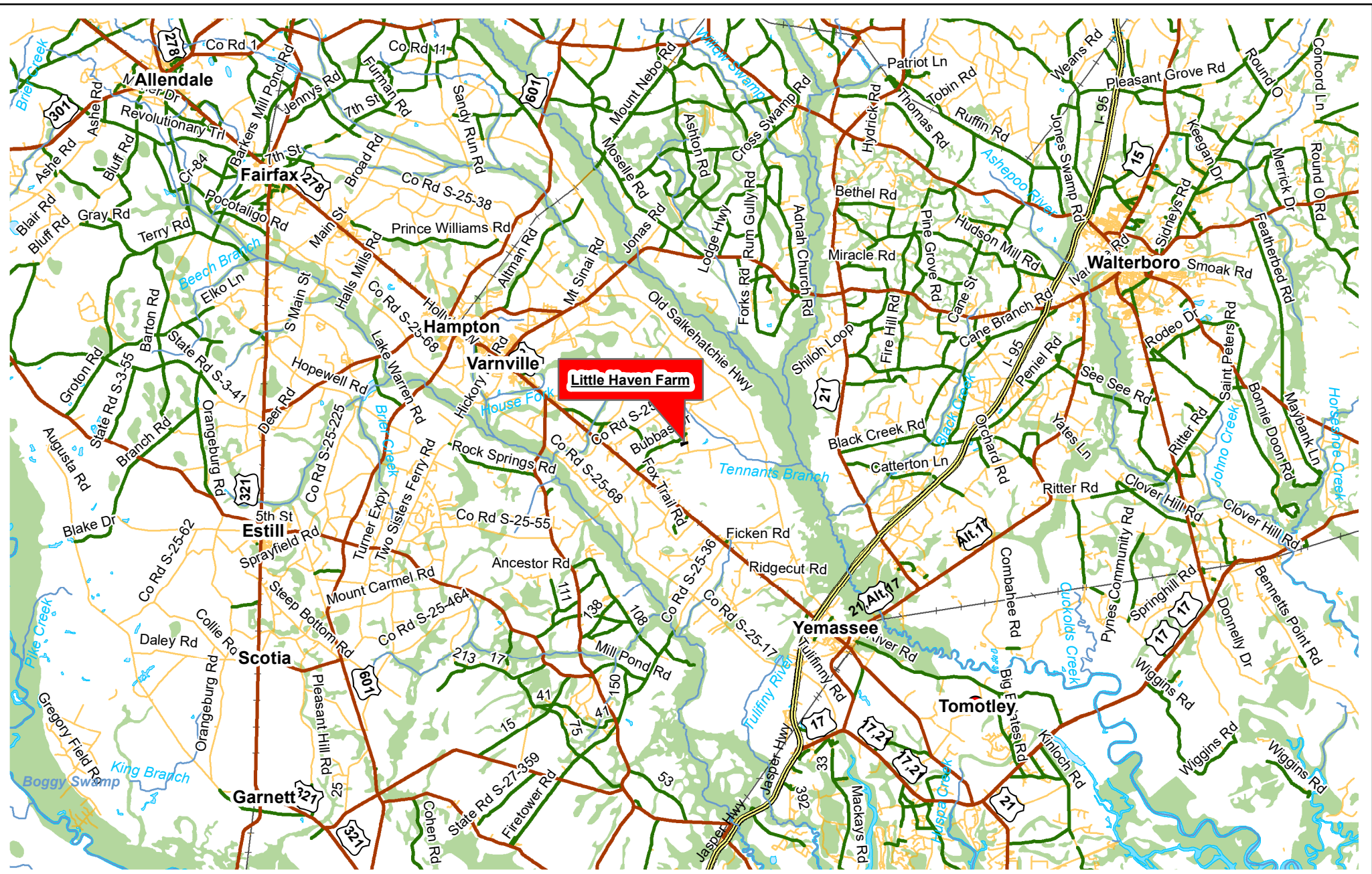
Notes:

1. This offering is subject to change or withdrawal without notice.

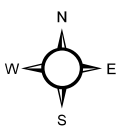
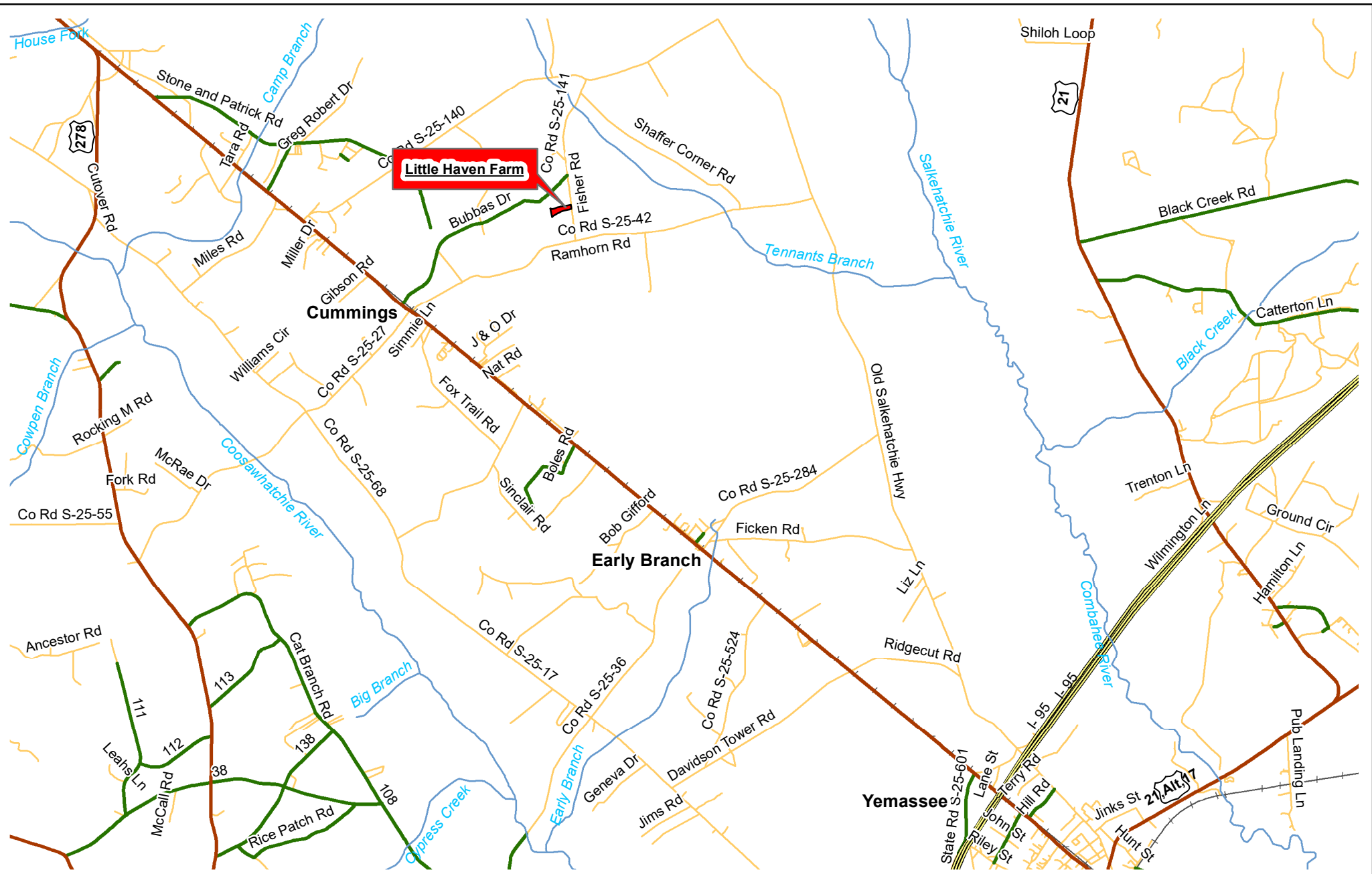


Little Haven Farm Property Highlights

- Nestled in the rural community of Cummings, SC
- Frontage on Fisher Rd (paved)
- Mostly open fields with a 1 acre (+/-) pond
- Productive soils (crops, pine trees)
- Abundant wildlife in this area including deer, turkeys, and doves
- No conservation easements
- 11 (+/-) miles from Hampton (restaurants, gas, groceries, hospital with 24/7 emergency room services)
- 14 (+/-) miles to I-95 at Yemassee, SC (Exit 38)
- 37 (+/-) miles to Beaufort, SC
- 52 (+/-) miles to Bluffton, SC
- 60 (+/-) miles to Hilton Head Island, SC
- 65 (+/-) miles to Savannah, GA

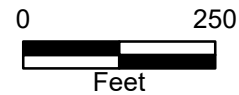
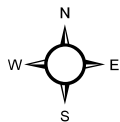
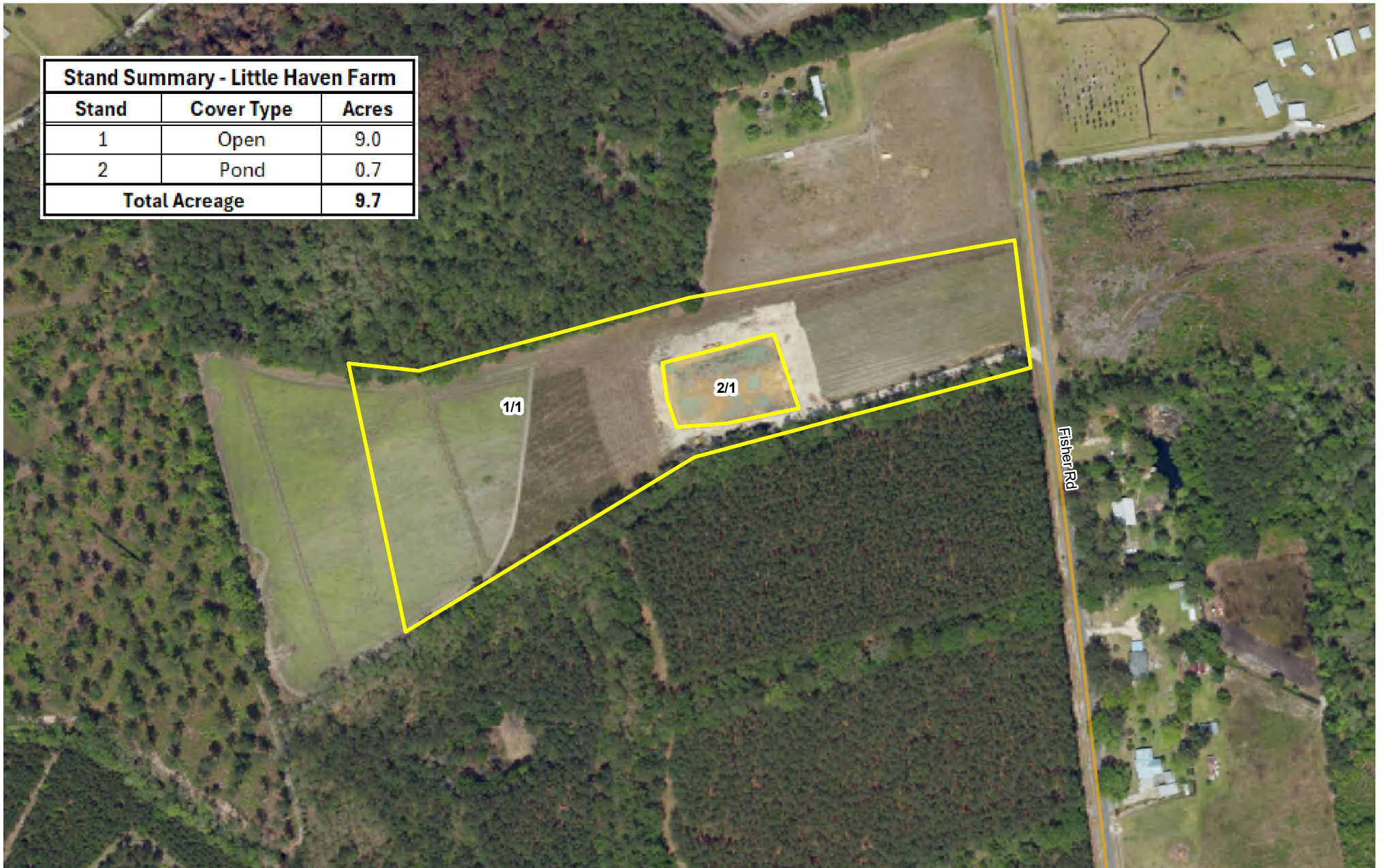


Location Map
 Little Haven Farm
 9.75 +/- Plat Acres
 9.7 +/- GIS Acres
 Hampton County, SC
 Date: 2/25/2025



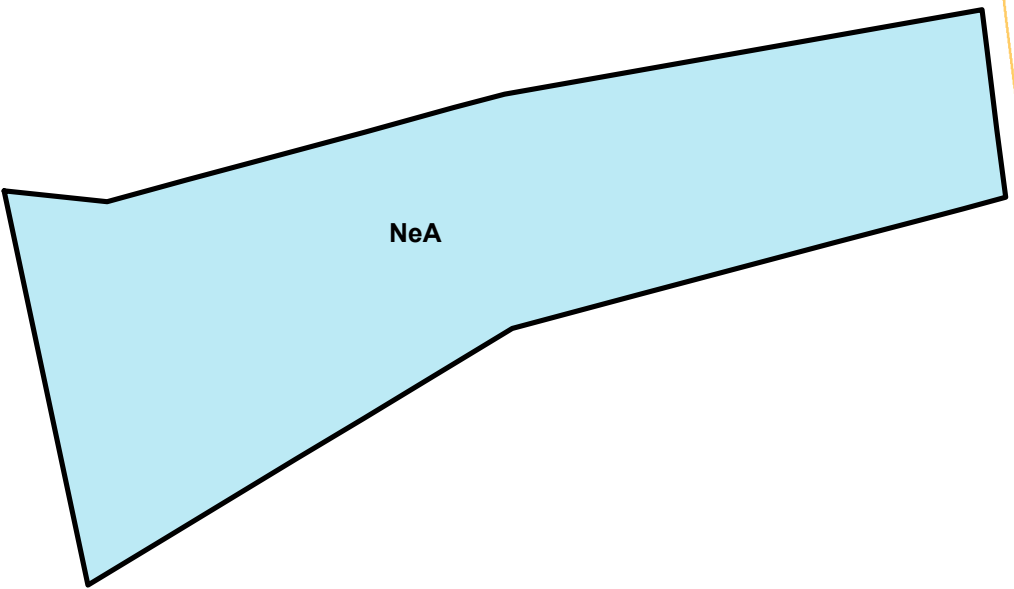
Location Map
 Little Haven Farm
 9.75 +/- Plat Acres
 9.7 +/- GIS Acres
 Hampton County, SC
 Date: 2/24/2025

Stand Summary - Little Haven Farm		
Stand	Cover Type	Acres
1	Open	9.0
2	Pond	0.7
Total Acreage		9.7



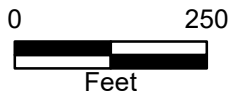
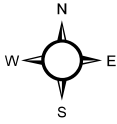
Stand Map
 Little Haven Farm
 9.75 +/- Plat Acres
 9.7 +/- GIS Acres
 Hampton County, SC
 Date: 2/24/2025
 2023 Aerial Photography

Bubbas Dr



Fisher Rd

Soils Data - Little Haven Farm				
Map Unit Symbol	Map Unit Name	Site Index	Acres	Percent
NeA	Nansemond loamy sand	86	9.7	100.00%
Site Index Representative of Loblolly Pine			9.7	100.00%



Soils Map
 Little Haven Farm
 9.75 +/- Plat Acres
 9.7 +/- GIS Acres
 Hampton County, SC
 Date: 2/25/2025

