

North Hendrix

2,016.14 (+/-) Acres

Hampton County, SC

Offered at \$16,129,120 (\$8,000/acre)

There are no conservation easements on this property

Shown by appointment only

For Showings

Bill Mixon	(803) 842-4602	bill@wisebatten.com
Mary Beth Crapse	(803) 942-3824	marybeth@wisebatten.com

Notes:

1. This is a joint listing with Brown Land + Plantation Advisors
2. This offering is subject to change or withdrawal without notice.

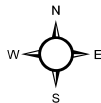
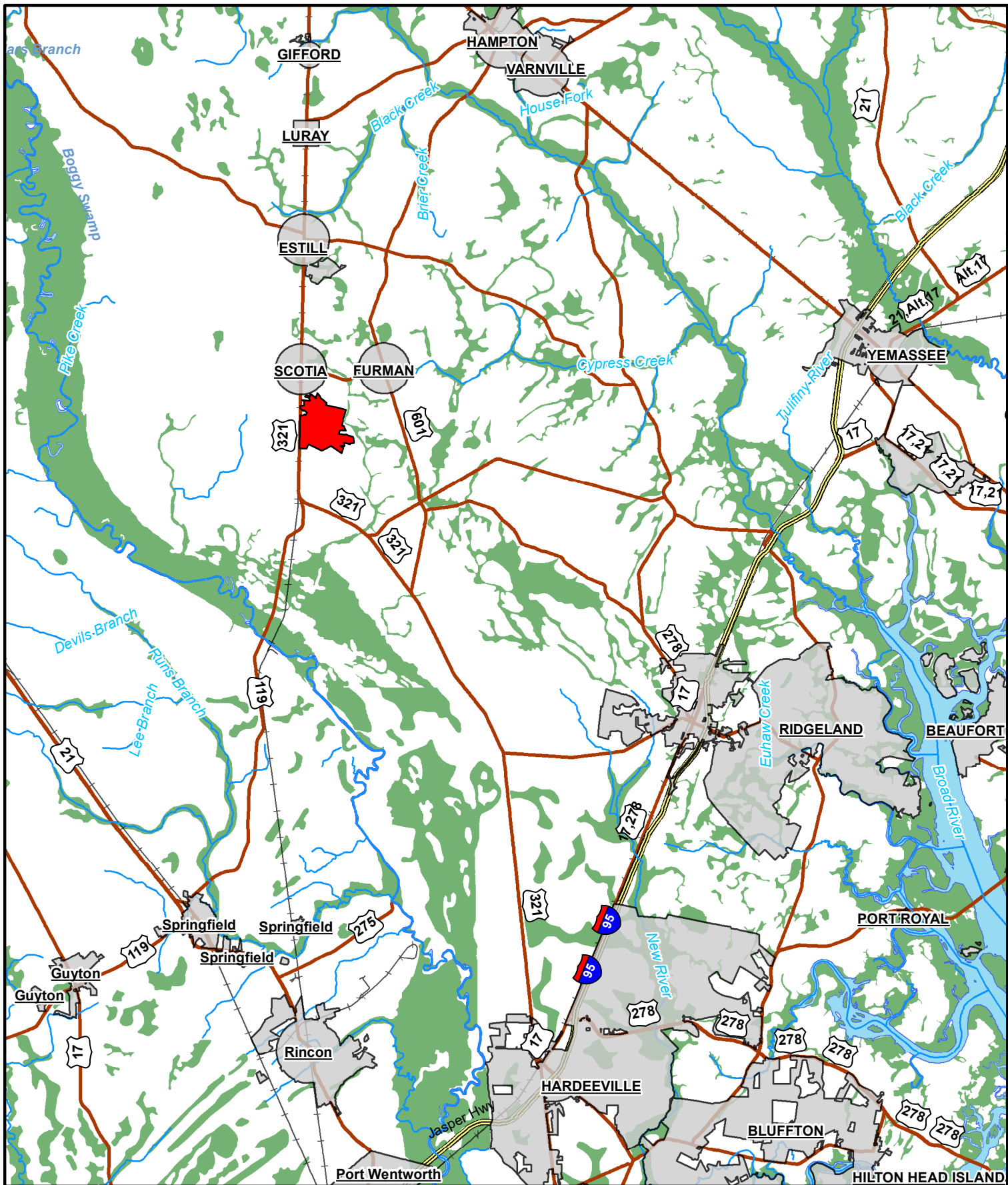


North Hendrix – Property Highlights

- **2,537.62 (+/-) original acreage**
- **521.62 (+/-) acres SOLD Feb 2026**
- **2,016.14 (+/-) acres remaining**

- 2,016.14 +/- acres south of Scotia, SC in Hampton County
- Planted loblolly and longleaf pine
- House and tractor shed
- Quality road system throughout
- Excellent deer and turkey populations
- Frontage on Pleasant Hill Rd (paved) and US Hwy 321
- Very productive soils for timberland
- Timber details will be available to prospective buyers who we deem to be financially capable and seriously interested parties
- 20 +/- miles to Hampton, SC
- 52 +/- miles to Beaufort, SC
- 46 +/- miles to Bluffton, SC
- 53 +/- miles to Hilton Head Island, SC
- 48 +/- miles to Savannah, GA
- **No conservation easements**

Note to Brokers: To be eligible for any commission offered by the Seller when purchasing a property listed by Wise Batten, Inc., a cooperating broker must be identified at the time of initial contact and must be present at the initial showing. If these conditions are not



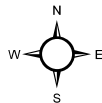
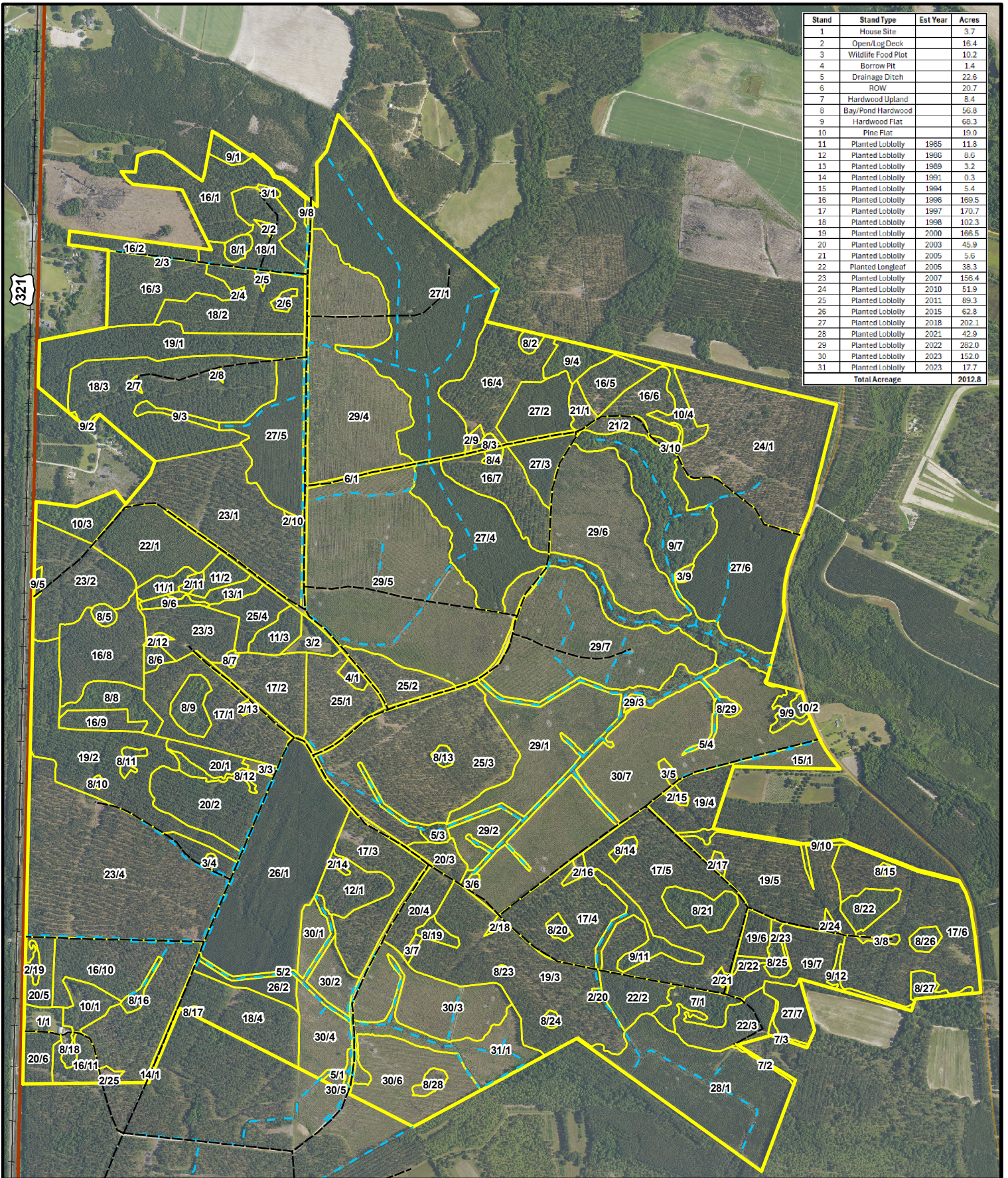
Legend

- North Hendrix Location
- Primary Highway
- Interstate
- South Carolina Municipal Area
- Georgia Municipal Area



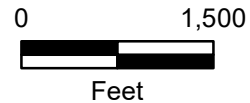
Location Map
 North Hendrix Tract
 2012.8 +/- GIS Acres
 Hampton County, SC
 Date: 3/31/2026

Stand	Stand Type	Est Year	Acres
1	House Site		3.7
2	Open/Log Deck		16.4
3	Wildlife Food Plot		10.2
4	Borrow Pit		1.4
5	Drainage Ditch		22.6
6	ROW		20.7
7	Hardwood Upland		8.4
8	Bay/Pond Hardwood		56.8
9	Hardwood Flat		66.3
10	Pine Flat		19.0
11	Planted Loblolly	1985	11.8
12	Planted Loblolly	1986	8.6
13	Planted Loblolly	1989	3.2
14	Planted Loblolly	1991	0.3
15	Planted Loblolly	1994	5.4
16	Planted Loblolly	1996	169.5
17	Planted Loblolly	1997	170.7
18	Planted Loblolly	1998	102.3
19	Planted Loblolly	2000	166.5
20	Planted Loblolly	2003	45.9
21	Planted Loblolly	2005	5.6
22	Planted Longleaf	2005	38.3
23	Planted Loblolly	2007	156.4
24	Planted Loblolly	2010	51.9
25	Planted Loblolly	2011	89.3
26	Planted Loblolly	2015	62.8
27	Planted Loblolly	2018	202.1
28	Planted Loblolly	2021	42.9
29	Planted Loblolly	2022	282.0
30	Planted Loblolly	2023	152.0
31	Planted Loblolly	2023	17.7
Total Acreage			2012.8



Legend

- Access Road
- Drainage Ditch
- Stand Delineation
- North Hendrix Boundary

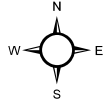
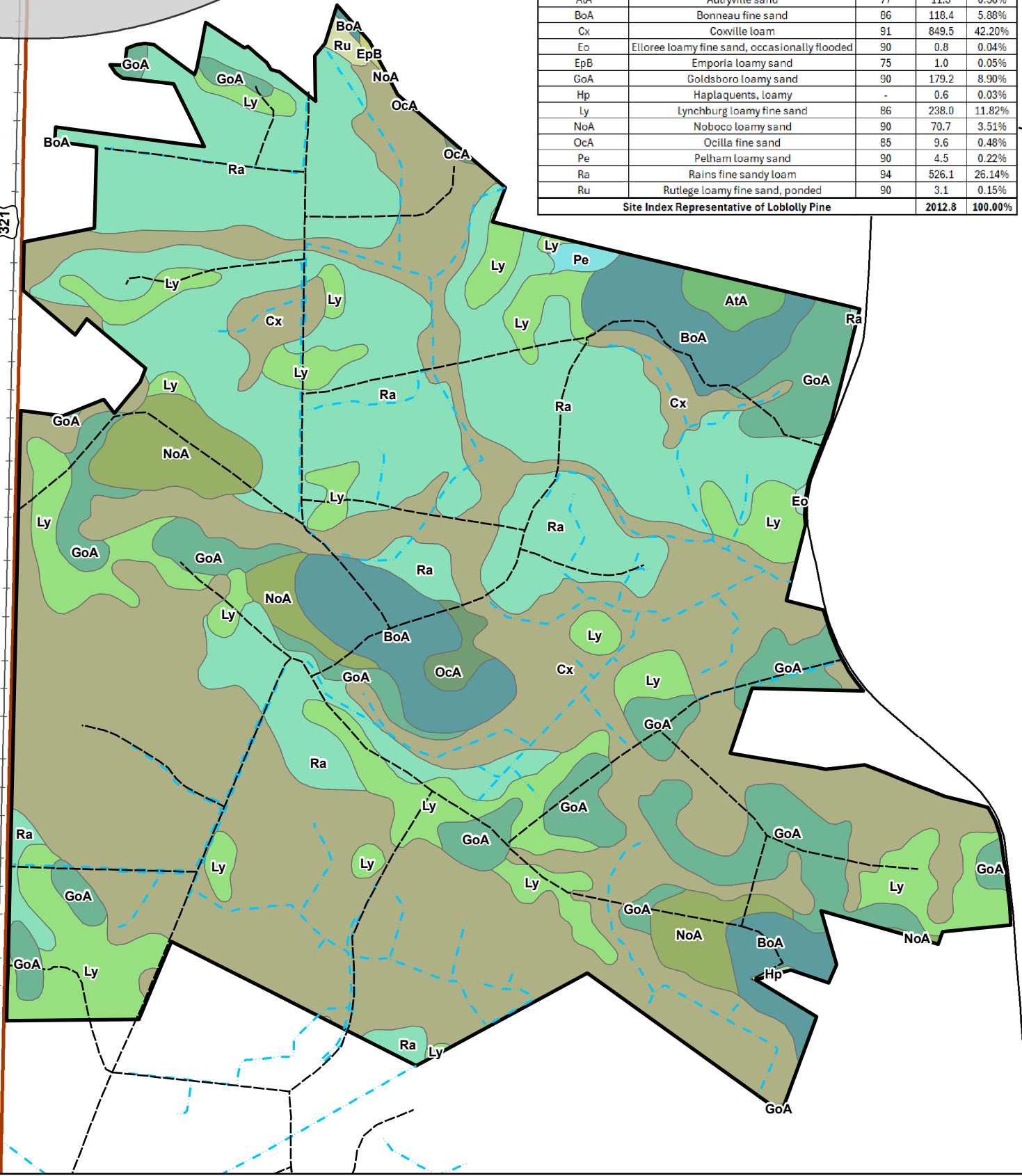


Stand Map
 North Hendrix Tract
 2012.8 +/- GIS Acres
 Hampton County, SC
 Date: 3/24/2026
 2025 Aerial Imagery

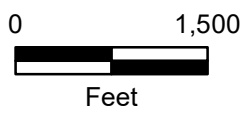
SCOTIA

Soils Data - North Hendrix Tract				
Map Unit Symbol	Map Unit Name	Site Index	Acres	Percent
AtA	Autryville sand	77	11.3	0.56%
BoA	Bonneau fine sand	86	118.4	5.88%
Cx	Coxville loam	91	849.5	42.20%
Eo	Ellore loamy fine sand, occasionally flooded	90	0.8	0.04%
EpB	Emporia loamy sand	75	1.0	0.05%
GoA	Goldsboro loamy sand	90	179.2	8.90%
Hp	Haplaquents, loamy	-	0.6	0.03%
Ly	Lynchburg loamy fine sand	86	238.0	11.82%
NoA	Noboco loamy sand	90	70.7	3.51%
OcA	Ocilla fine sand	85	9.6	0.48%
Pe	Pelham loamy sand	90	4.5	0.22%
Ra	Rains fine sandy loam	94	526.1	26.14%
Ru	Rutlege loamy fine sand, ponded	90	3.1	0.15%
Site Index Representative of Loblolly Pine			2012.8	100.00%

321



Legend			
	Access Road		BoA
	Drainage Ditch		Cx
	North Hendrix Boundary		Eo
	South Carolina Municipal Area		EpB
	Map Unit Symbol		GoA
			Ly
			NoA
			OcA
			Pe
			Ra
			Hp
			Ru



Soils Map
 North Hendrix Tract
 2012.8 +/- GIS Acres
 Hampton County, SC
 Date: 3/31/2026