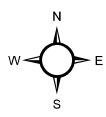
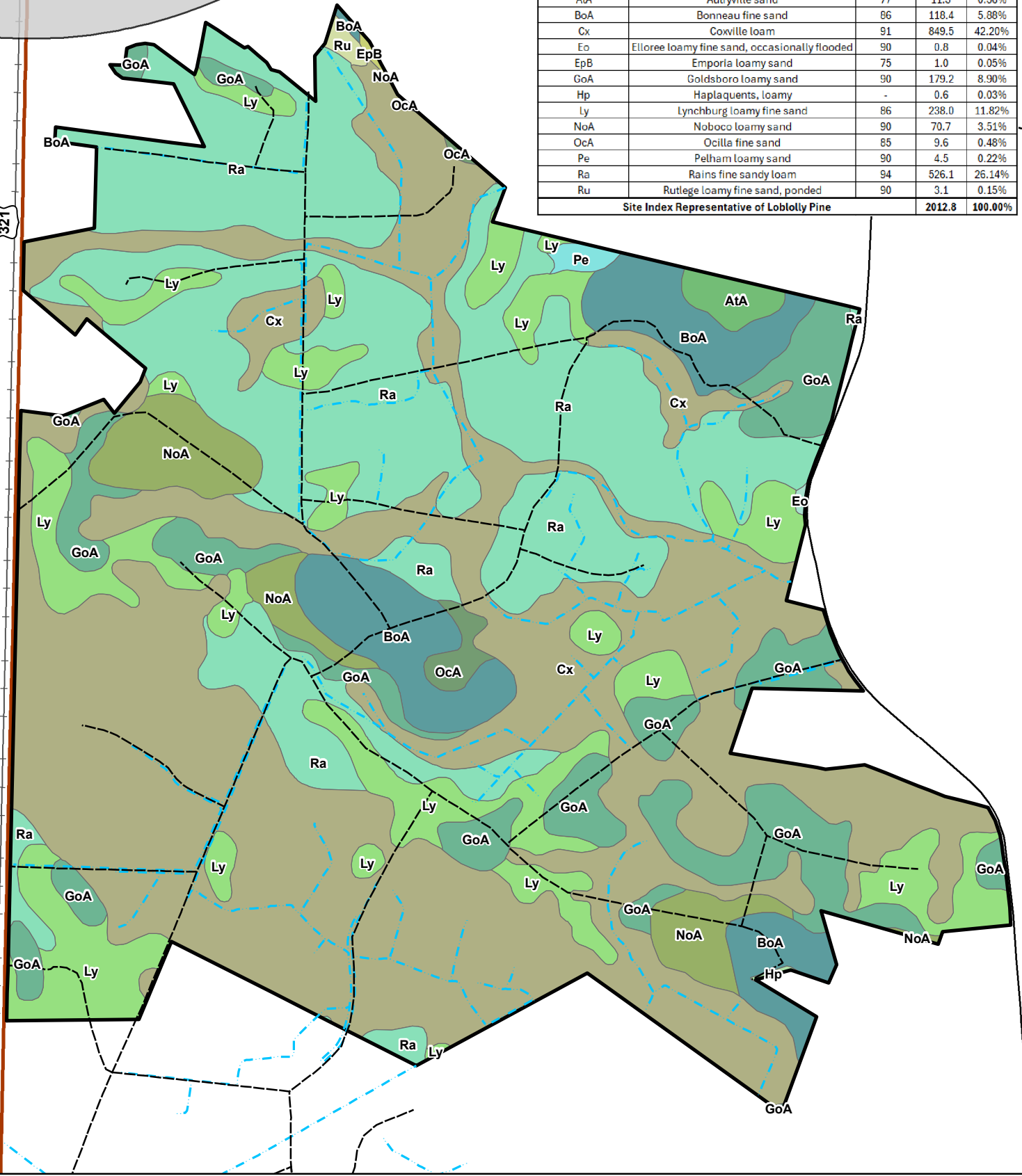


SCOTIA

Soils Data - North Hendrix Tract				
Map Unit Symbol	Map Unit Name	Site Index	Acres	Percent
AtA	Autryville sand	77	11.3	0.56%
BoA	Bonneau fine sand	86	118.4	5.88%
Cx	Coxville loam	91	849.5	42.20%
Eo	Ellore loamy fine sand, occasionally flooded	90	0.8	0.04%
EpB	Emporia loamy sand	75	1.0	0.05%
GoA	Goldsboro loamy sand	90	179.2	8.90%
Hp	Haplaquents, loamy	-	0.6	0.03%
Ly	Lynchburg loamy fine sand	86	238.0	11.82%
NoA	Noboco loamy sand	90	70.7	3.51%
OcA	Ocilla fine sand	85	9.6	0.48%
Pe	Pelham loamy sand	90	4.5	0.22%
Ra	Rains fine sandy loam	94	526.1	26.14%
Ru	Rutlege loamy fine sand, ponded	90	3.1	0.15%
Site Index Representative of Loblolly Pine			2012.8	100.00%

321

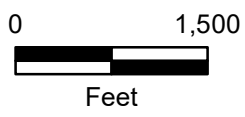


Legend

- Access Road
- - - Drainage Ditch
- ▬ North Hendrix Boundary
- ▭ South Carolina Municipal Area

Map Unit Symbol

BoA	Ly
Cx	NoA
Eo	OcA
EpB	Pe
GoA	Ra
Hp	Ru



Soils Map
 North Hendrix Tract
 2012.8 +/- GIS Acres
 Hampton County, SC
 Date: 3/31/2026