

# Richmond Plantation

154 (+/-) Acres

Berkeley County, South Carolina

Priced at \$14,500,000

---

## For Showings

Mary Beth Crapse	(803) 942-3824	<a href="mailto:marybeth@wisebatten.com">marybeth@wisebatten.com</a>
Bill Mixon	(803) 842-4602	<a href="mailto:bill@wisebatten.com">bill@wisebatten.com</a>
Wise Batten, Inc.	(803) 625-4256	

Additional Information may be seen at [www.wisebatten.com](http://www.wisebatten.com)

---

Protected by a conservation easement with Lowcountry Open Land Trust

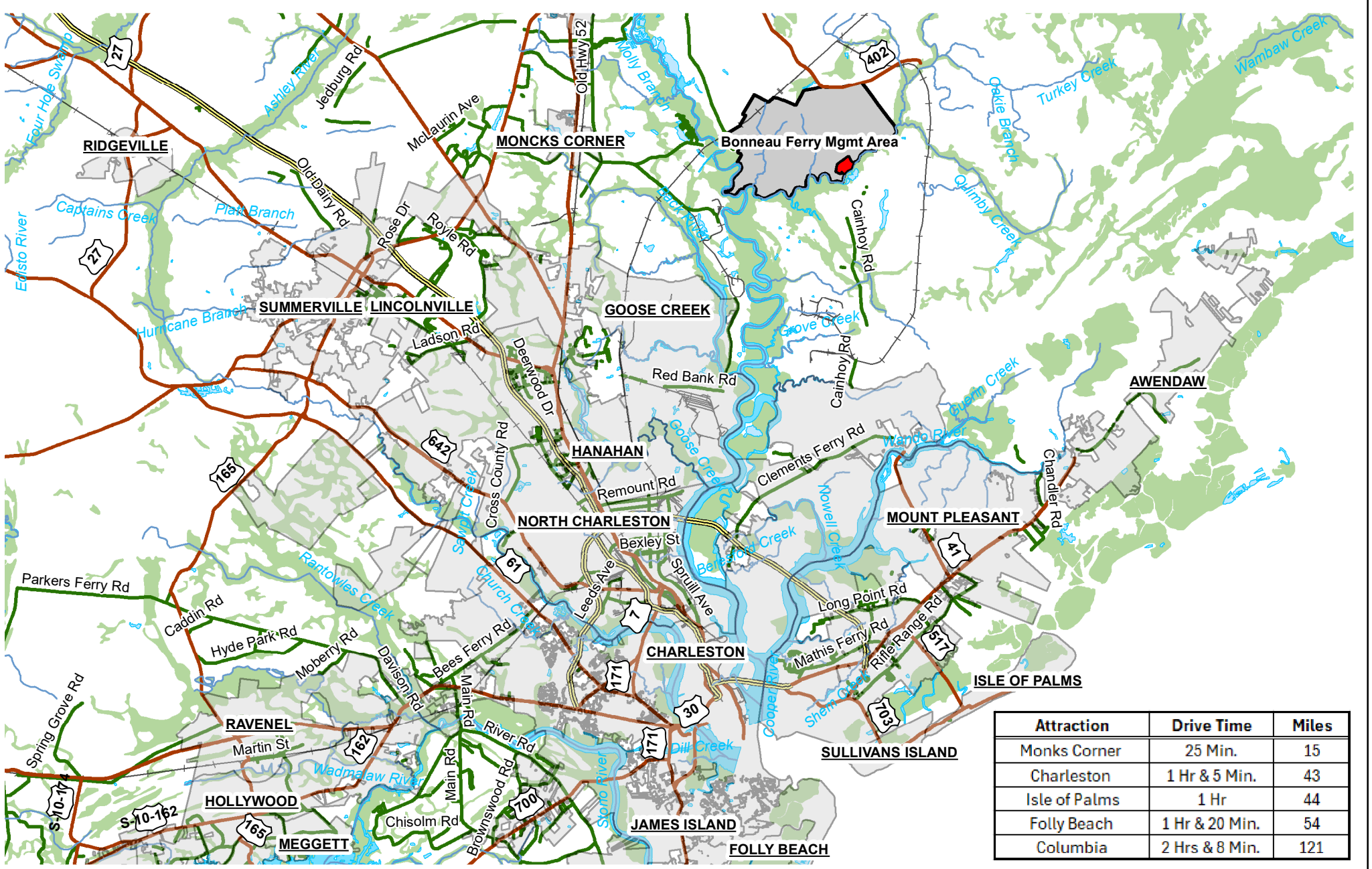
## Notes:

1. This offering is subject to change or withdrawal without notice.

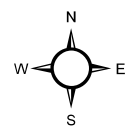


## Richmond Plantation Property Highlights

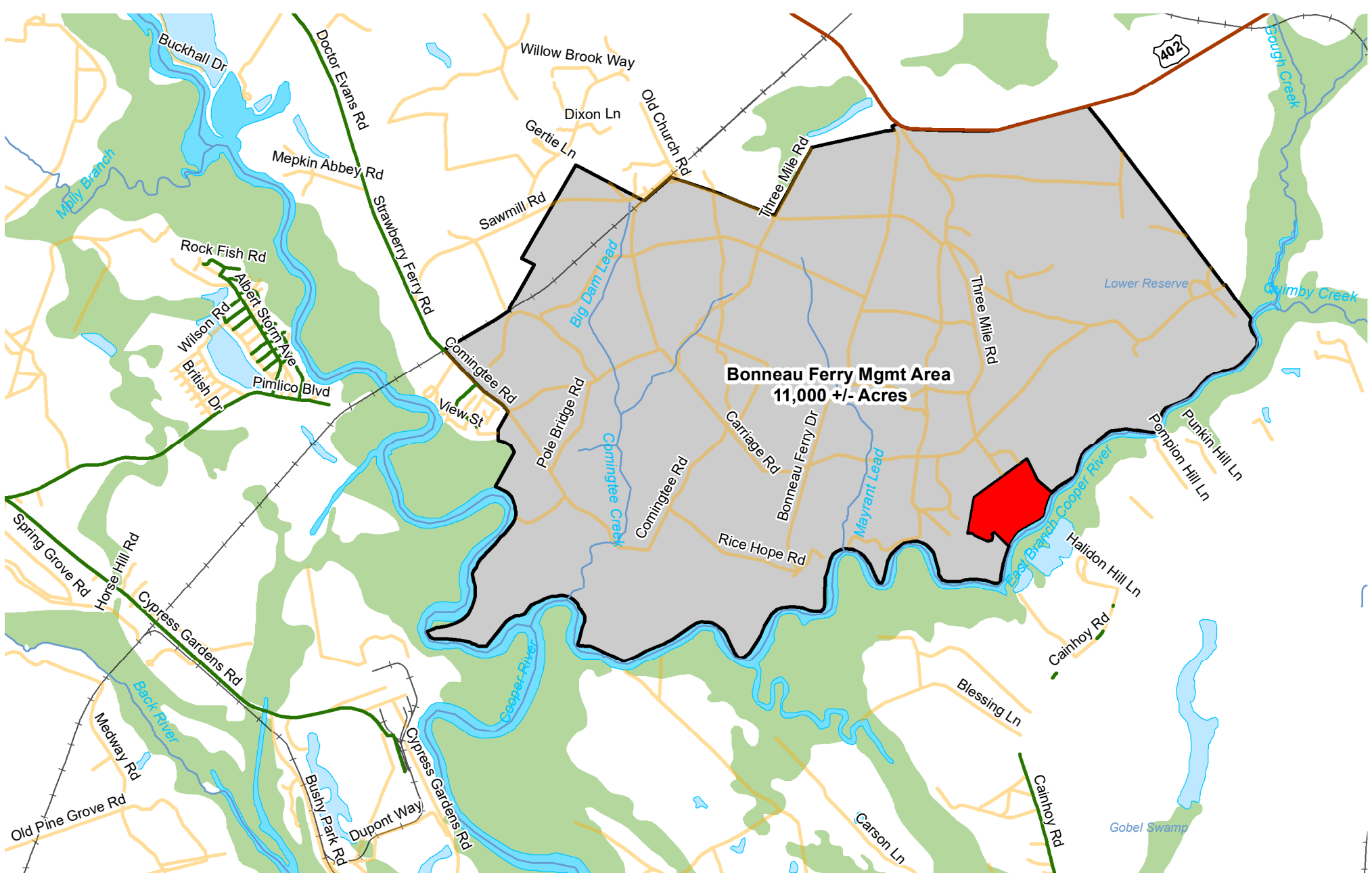
- 154.1 (+/-) acre country manor on the East Branch of the Cooper River
- Built by George A. Ellis in 1927 who was co-founder of E.F. Hutton & Co.
- 7,798 square foot English Manor home with 5 bedrooms, 5 full bathrooms, 3 half bathrooms
- Four additional outbuildings were also constructed in the Shavian Manorial style at the same time as the manor house.
- 5+ year meticulous restoration
- Grand live oak entrance
- Walled Camellia Garden
- 2880+ feet of river frontage with deep water dock on the East Branch of the Cooper River
- 3 (+/-) mile long driveway
- Original Hope's windows completely restored
- Nestled within 10,000 acres of protected landscape within the Bonneau Ferry Wildlife Management Area
- 2.7 (+/-) acre stocked bass pond
- Boat House
- 6 (+/-) acre dove field
- 140' x 45' horse stable
- Neighborhood with a high density of protected properties
- Listed on the National Register of Historic Places
- Protected by a conservation easement with Lowcountry Open Land Trust
- Nearby plantations include Longwood, Quinby, Halidon Hill, Cedar Hill, Middleburg, Silk Hope and others
- 25 +/- miles to Mount Pleasant
- 35.8 +/- miles to Sullivan's Island
- 36.9 +/- miles to Charleston International Airport
- 35 +/- miles to Downtown Charleston



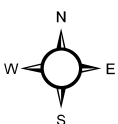
Attraction	Drive Time	Miles
Monks Corner	25 Min.	15
Charleston	1 Hr & 5 Min.	43
Isle of Palms	1 Hr	44
Folly Beach	1 Hr & 20 Min.	54
Columbia	2 Hrs & 8 Min.	121



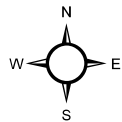
Location Map  
 Richmond Plantation  
 154.1 +/- Acres  
 Berkeley County, SC  
 Date: 6/25/2025  
 2023 Aerial Photography




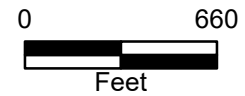
**Bonneau Ferry Mgmt Area**  
**11,000 +/- Acres**



Location Map  
 Richmond Plantation  
 154.1 +/- Acres  
 Berkeley County, SC  
 Date: 6/25/2025  
 2023 Aerial Photography

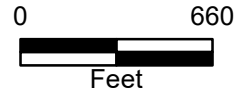
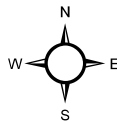
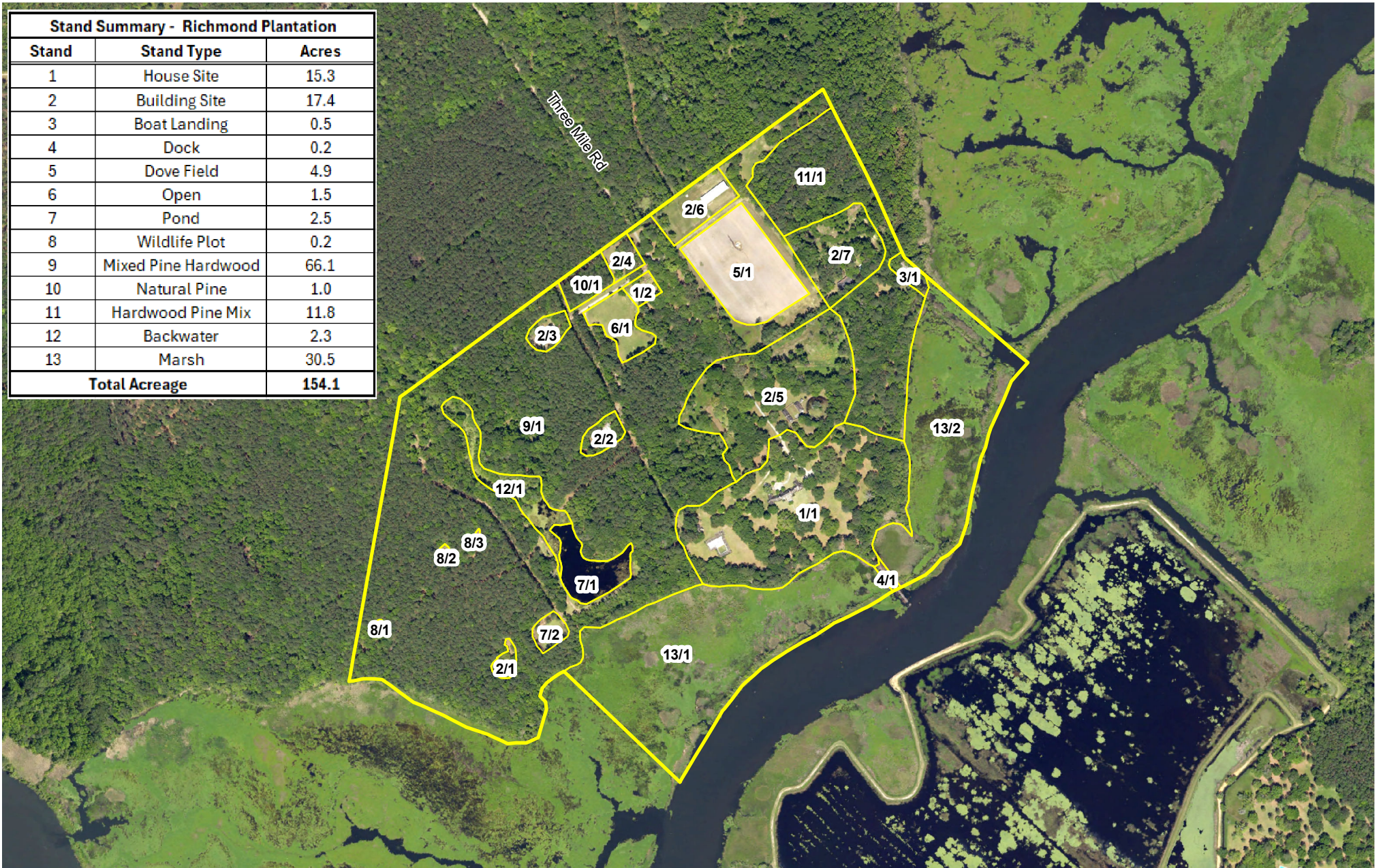


 Denotes 154.1 +/- Acres in the Lowcountry Land Trust



Boundary Map  
Richmond Plantation  
154.1 +/- Acres  
Berkeley County, SC  
Date: 3/20/2025  
2023 Aerial Photography

Stand Summary - Richmond Plantation		
Stand	Stand Type	Acres
1	House Site	15.3
2	Building Site	17.4
3	Boat Landing	0.5
4	Dock	0.2
5	Dove Field	4.9
6	Open	1.5
7	Pond	2.5
8	Wildlife Plot	0.2
9	Mixed Pine Hardwood	66.1
10	Natural Pine	1.0
11	Hardwood Pine Mix	11.8
12	Backwater	2.3
13	Marsh	30.5
<b>Total Acreage</b>		<b>154.1</b>



Stand Map  
 Richmond Plantation  
 154.1 +/- Acres  
 Berkeley County, SC  
 Date: 4/23/2025  
 2023 Aerial Photography