



Santee River Tract

3248.7 (+/-) GIS Acres

Berkeley County, SC

Offered at \$4,899,000

2,306.54 (+/-) acres are protected by a conservation easement

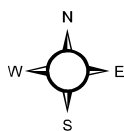
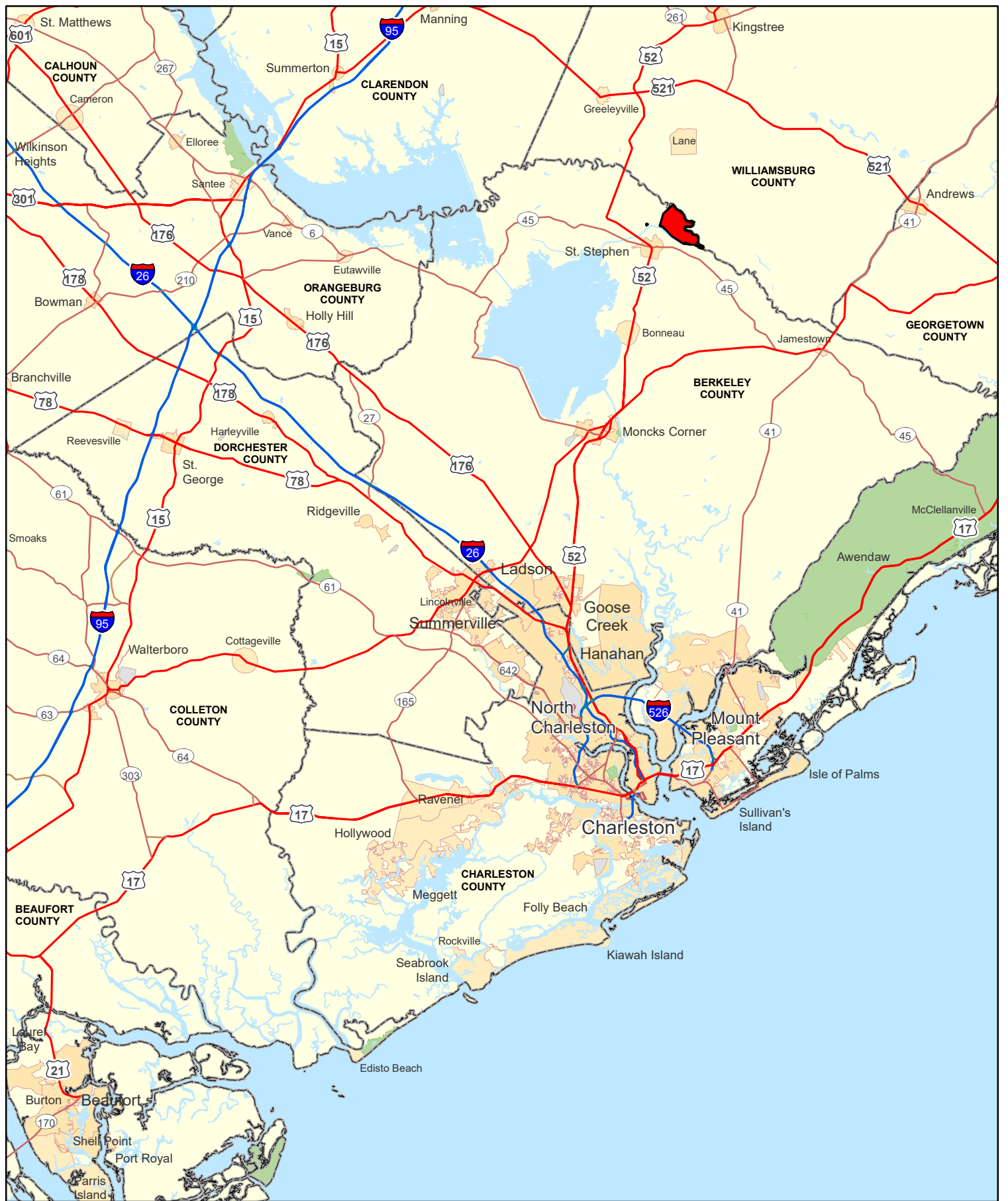
For Showings

Wise H. Batten, Sr.	(803) 943-6983	wisebatten1@gmail.com
Bill Mixon	(803) 842-4602	bill@wisebatten.com
Mary Beth Poston	(803) 625-4256	marybeth@wisebatten.com

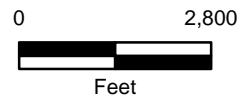
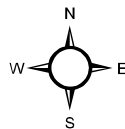
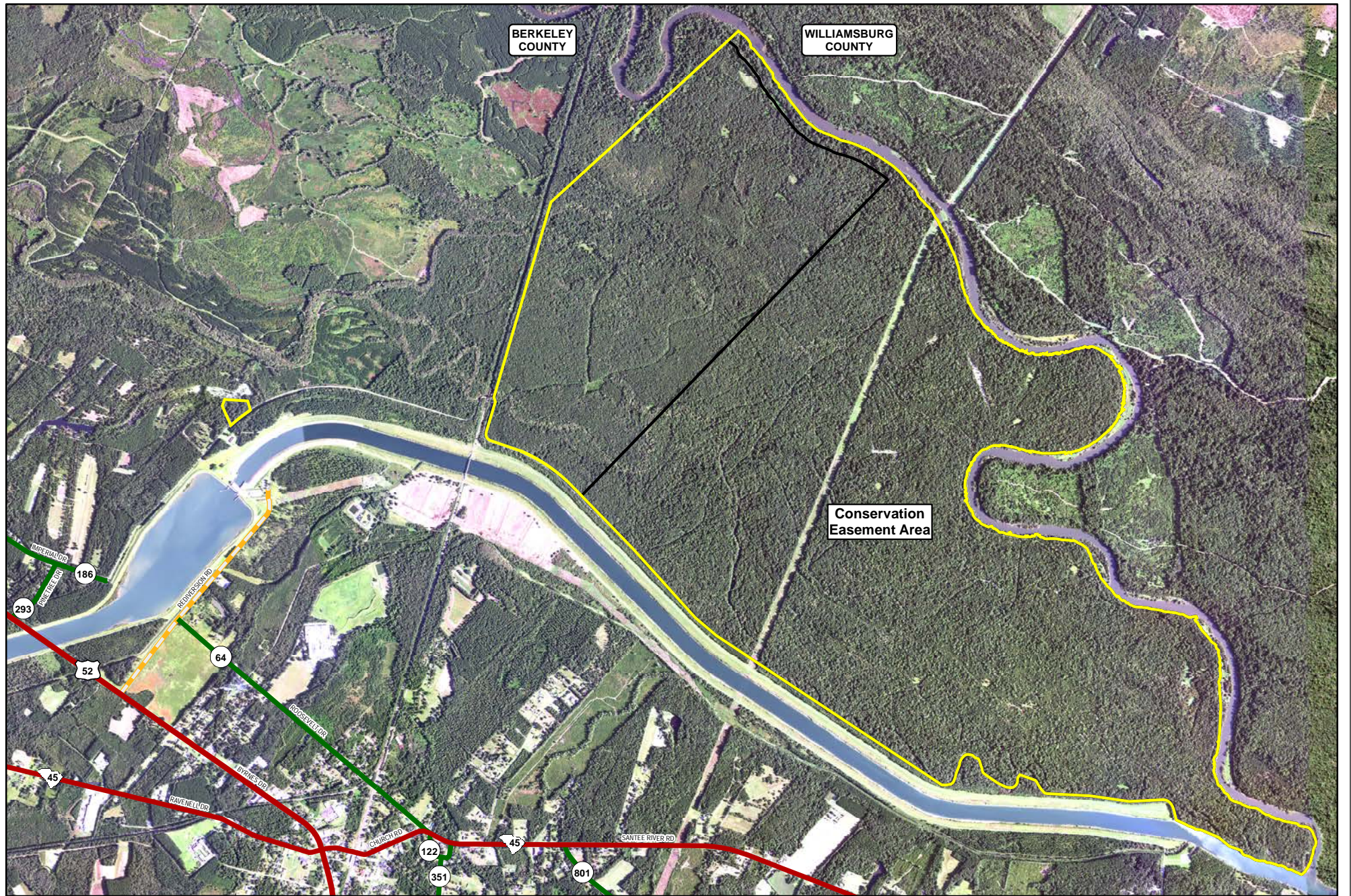
Notes:

1. This property is jointly listed with Brown Land & Plantation Advisors.
2. This offering is subject to change or withdrawal without notice.
3. We welcome the participation of other brokers.

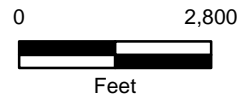
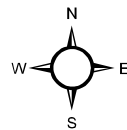
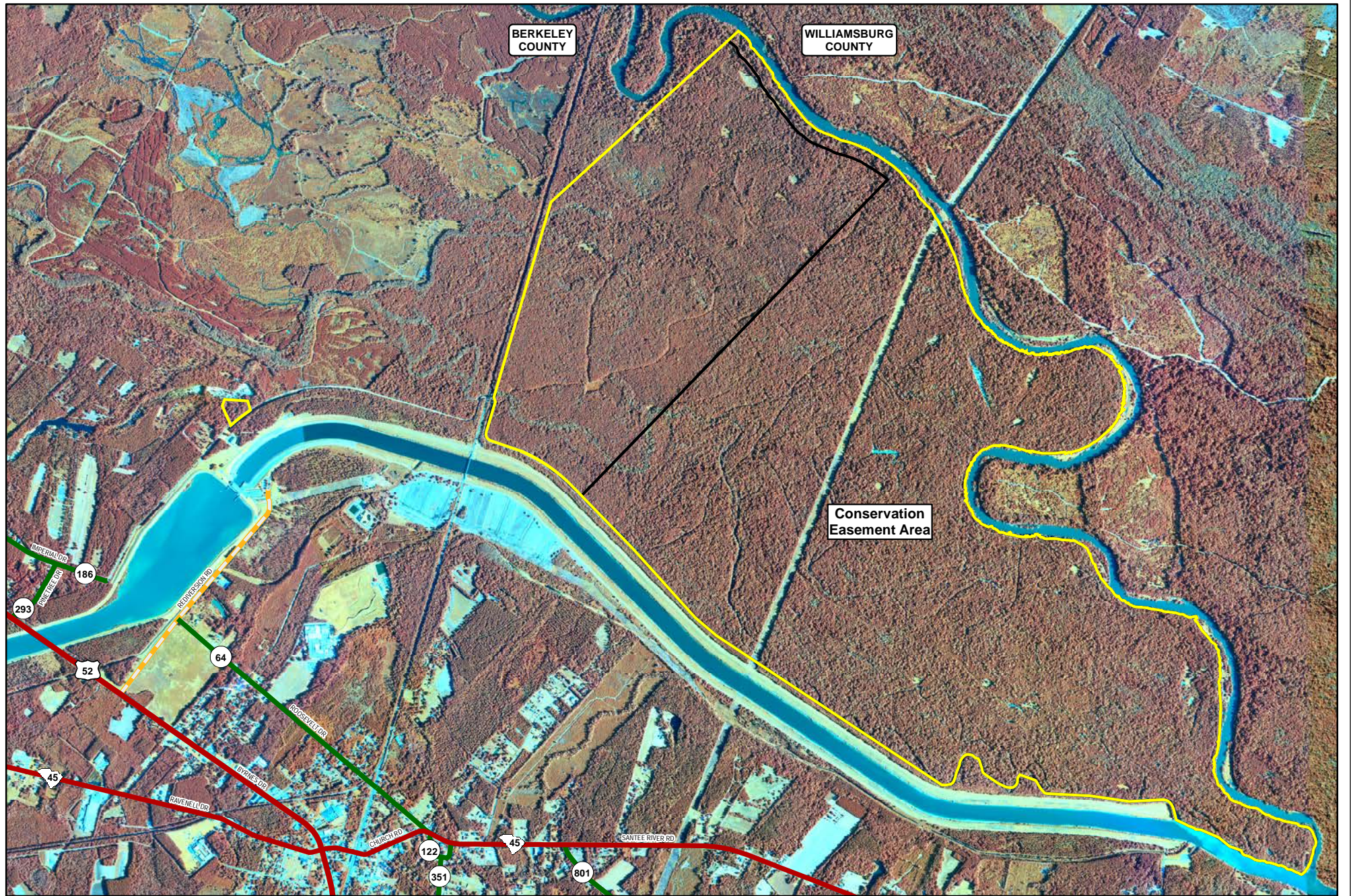




Regional Location Map
 Santee River Tract
 3,248.7± GIS Acres
 3,248.7± Tax Acres
 Berkeley County, SC
 March 12, 2021

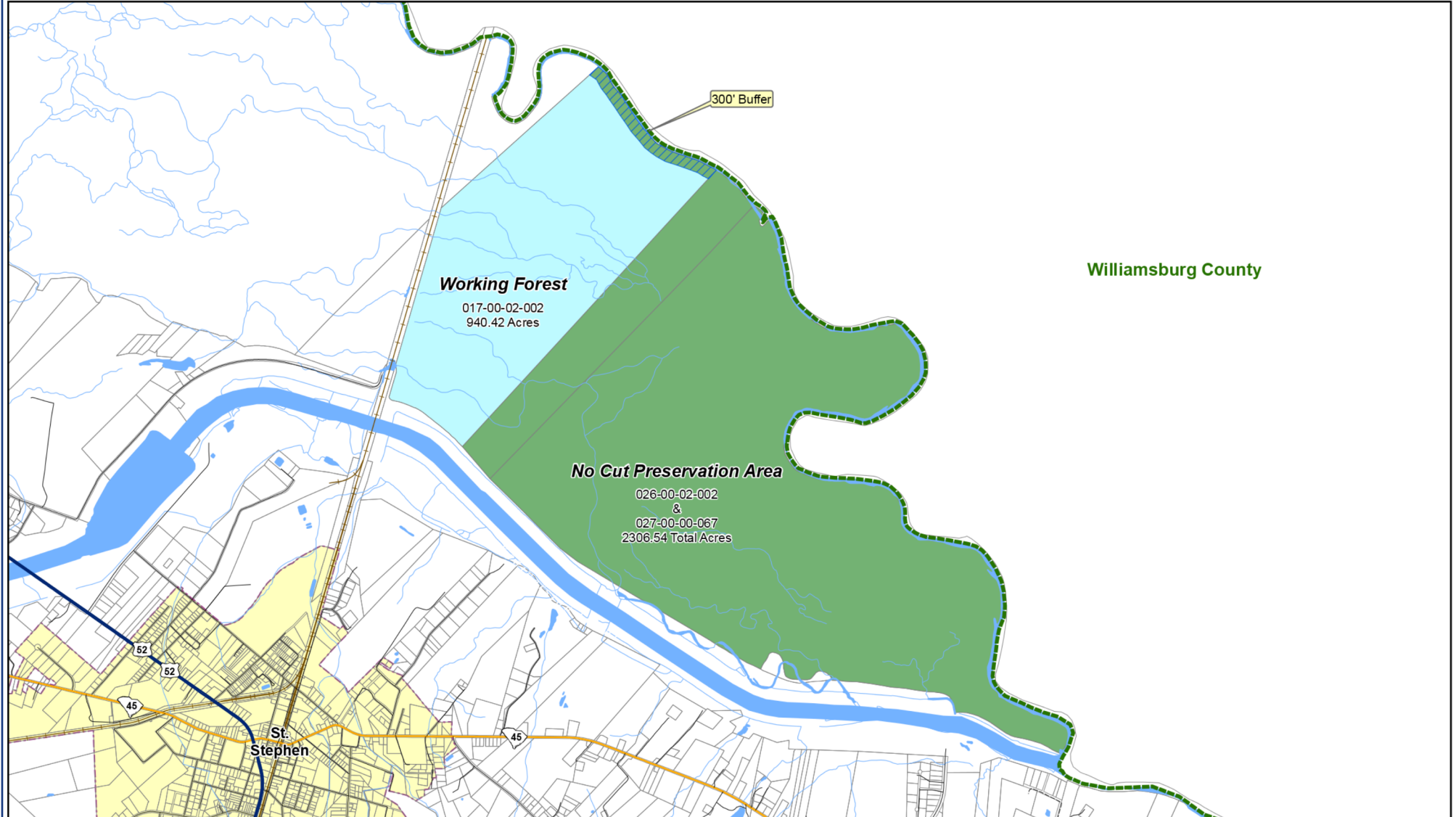



2019 Aerial Photography Map
 Santee River Tract
 3,248.7± GIS Acres
 3,248.7± Tax Acres
 Berkeley County, SC
 March 12, 2021



2019 Aerial Photography Map
 Santee River Tract
 3,248.7± GIS Acres
 3,248.7± Tax Acres
 Berkeley County, SC
 March 12, 2021

Santee Timber Tract



 Berkeley County GIS Department
P.O. Box 6122
Moncks Corner, SC 29461
(p) 843.719.4049 | (f) 843.719.4190
<http://gis.berkeleycountysc.gov>
Date: 12/18/2015



THE COUNTY OF BERKELEY AND ITS GIS DEPARTMENT DISCLAIMS ACCOUNTABILITY FOR THIS PRODUCT AND MAKES NO WARRANTY EXPRESS OR IMPLIED CONCERNING THE ACCURACY THEREOF. RESPONSIBILITY FOR INTERPRETATION AND APPLICATION OF THIS PRODUCT LIES WITH THE USER.

User: gisuser saved: 12/18/2015 file: G:\gisuser\gmg\ArcMap_documents\santee_timber_tract revised 12-15.mxd